

Portable, Total reflection X-ray fluorescence spectrometer

OUR **STEX** 200TX **NEW**

High sensitivity achievable matching with ICP-AES and atomic absorption analysis



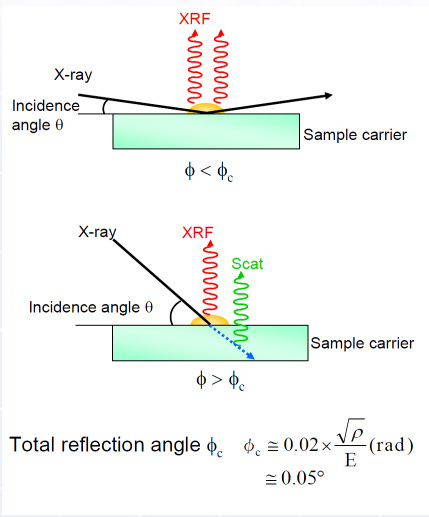
Features

- High sensitive silicon drift detector(SDD)
- Light weight, only 8kg
- Available measurement in from ppm to ppb level
- No liquid nitrogen is required

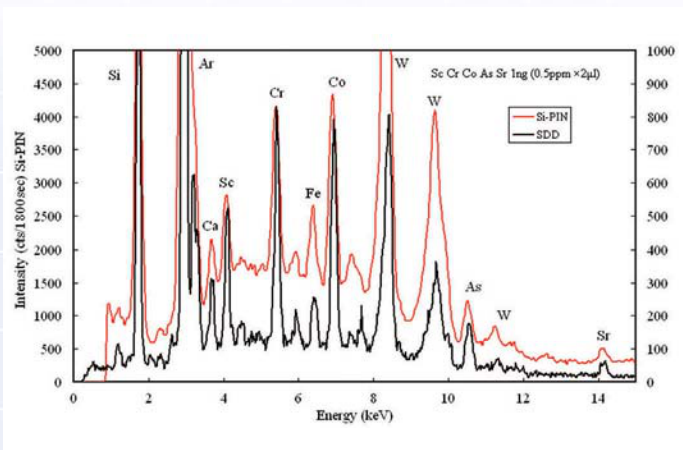
Application

- Inspection analysis of well water ,river water
- Analysis of eluted water from soils or toys
- On-site analysis in the field of food ,judgment
- Components analysis in human's hair

Analytical Principle



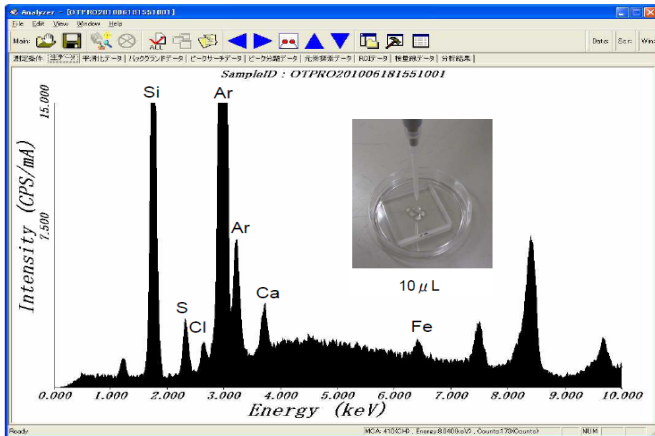
Comparison data of SDD detector and Si-PIN detector



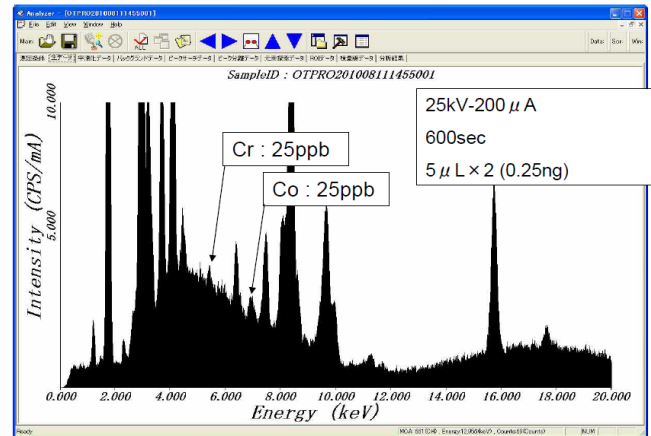
S/N ratio and resolution is improved by SDD detector

The spectra of rain water

Collection place : Neyagawa city , Osaka



The spectra of liquid sample

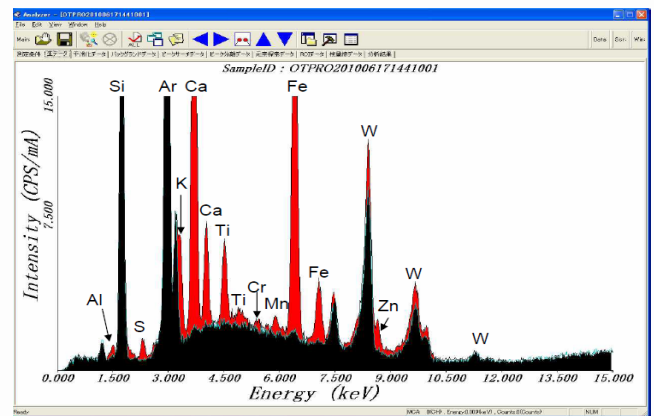


Analysis of SPM

Collection place : Neyagawa city , Osaka June 17, 2010
Collection time : 2 hour



The spectra of SPM



Specification

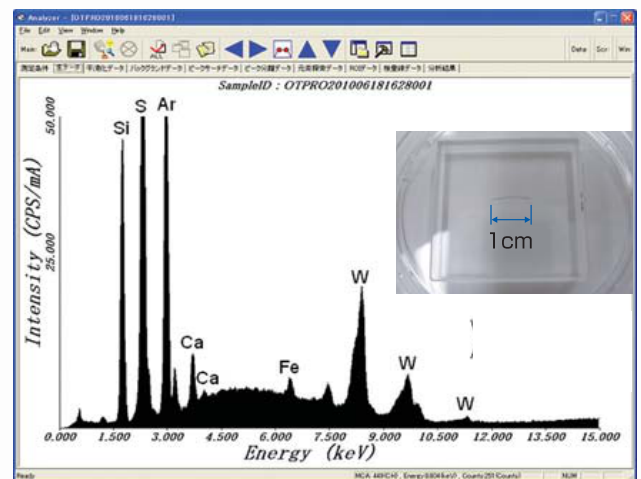
Measurement principle	Total Reflection X-ray Fluorescence spectrometer
Measuring object	liquid , drinking water etc...
Measuring element	13Al - 92U
Slit mechanism	X-ray waveguide
Stage	Optical flat
Total weight	About 8kg
Sample chamber atmosphere	Air
X-ray rated power	0 - 48kV , 0.2mA max / 48 - 50kV , 0.175mA max
Detector	SDD
Counting electronics	DSP
Condition of use	Temperature 5 ~ 27 °C
	Humidity 20 ~ 75 %
	Power AC 100 , 5A
	Grounding D-Class grounding
Option	Ink-jet printer , mouse etc.

Before an implementation of OURSTEX 200TX , a notification to Labor Standards Supervision Office is required.

⚠ For your correct and safe use , please be sure to read the operation manual in advance.

Contact for Inquiry

Analysis of human's hair



- The product specifications or designs in this literature are subject to change without notice for improvements.
- The product colors may differ from actual ones due to printing.

OURSTEX

OURSTEX Corporation

Head office: 13-20 HOMMACHI NEYAGAWA OSAKA JAPAN 572-0832

TEL : +81-72-823-9361 FAX : +81-72-823-9340

Tokyo office: 8-37 SANEI-CHO SHINJUKU-KU TOKYO JAPAN 160-0008

TEL : +81-3-3358-4985 FAX : +81-3-3358-1954

URL : <http://www.ourstex.co.jp>